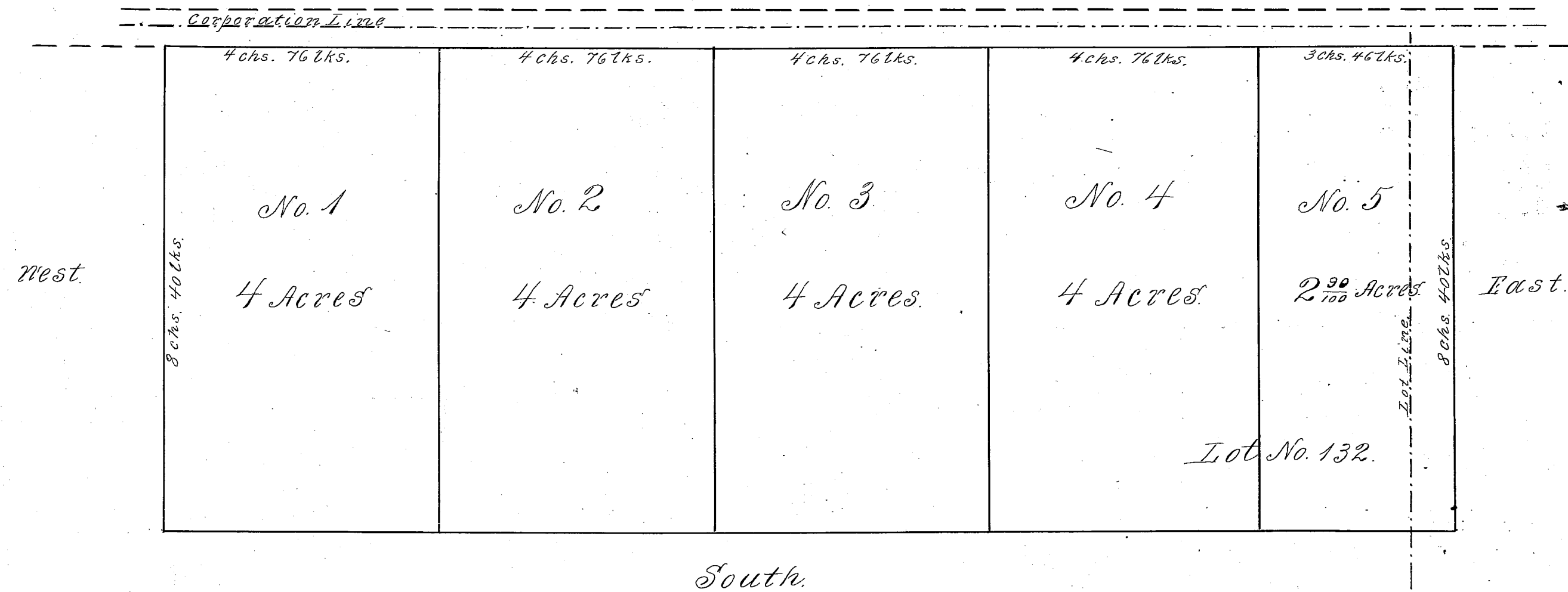


# Swan's Allotment.

North



Total Contents 18 <sup>20</sup>/<sub>100</sub> acres

Scale 2 chains to the inch

Map of an Allotment of Land in Lots No. 132 & 134, Chardon,  
— Geauga County, Ohio —

Made for Dr. Clara J. Swan, January 5<sup>th</sup> 1906.

M. J. Maynard, Surveyor

Received and Recorded February 9<sup>th</sup> 1906.

J. C. Ford, Recorder.

VOL. 1 PG. 34